



# SIEBO

The outstanding  
full mobile drum screen



# Features



## Latest technology

- 55 kW engine (EU Stage V, EPA Tier 4 final) without SCR/AdBlue
- user friendly display with all functions at a glance
- setting options at the front and back of the machine



## Fines grain conveyor belt

- 1000 mm / 1200 mm wide fines conveyor belt is 7200 mm long. Longer versions optionally available.
- optionally available as a one-piece or two-piece conveyor



## Coarse grain conveyor belt

- the 1000 mm / 1200 mm wide coarse grain conveyor belt is 5500 mm / 6500 mm long. Longer versions optionally available.
- tilting angle
- speed steplessly changeable



## Galvanized conveyor belt frames

- all conveyor belt frames are hot-dip galvanized for a long lifetime also in difficult conditions.



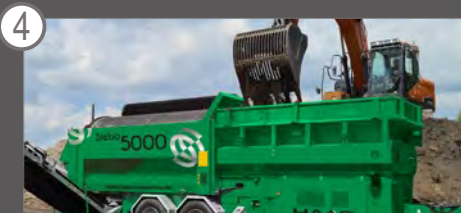
## Optional attachments



**Air separator:** Extraction and underblowing, without assembly and disassembly. The air separator remains on the belt and can also be folded in.

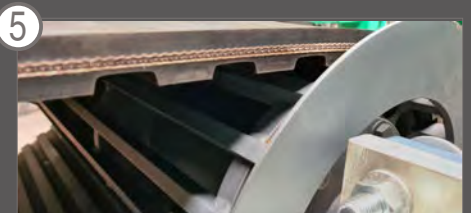


**Stone belt:** For separating rollable material (e.g. stones) as a fully mobile or semi-mobile solution directly on the drum screen.



## Hopper

- huge hopper with a width of 4000 mm / 4700 mm and a volume of approx. 6 m<sup>3</sup> / 6,5 m<sup>3</sup> / 7,5 m<sup>3</sup>
- optionally available with pluggable side wall extensions



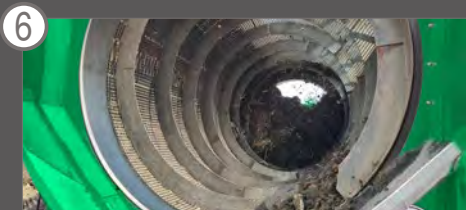
## Positive drive hopper belt

- nearly maintenance free
- no slipping even with heavy material and full hopper

## Customize your machine!

- Cleanfix® reversing fan
- pluggable hopper extensions
- remote control
- longer conveyor belts
- magnet head pulley for fines and coarse grain conveyor belt
- bunker grid
- stone belt
- hybrid version
- air separator on the oversize conveyor belt

Not the right one? Please contact us!



### Screening drum

- 2000 / 2200 mm diameter and 4550 / 5500 / 7500 mm length for best screening results
- optionally available as a punch plate steel drum or a segment drum
- the drum is supported by eight big dimensional carrier wheels.



### Maintenance friendly door

- the sidewall is one big door
- hydraulic lift arms raise the drum to the front to provide optimum access for easy drum screen change..



### Cleaning brush

- powerful, hydraulically foldable cleaning brush
- automatic self-cleaning system
- no plugging screening holes



# Technical data Siebo

Under carriage	Siebo 5000	Siebo 6000	Siebo 8000
Admissible weight	16.000 kg	19.000 kg	26.000 kg

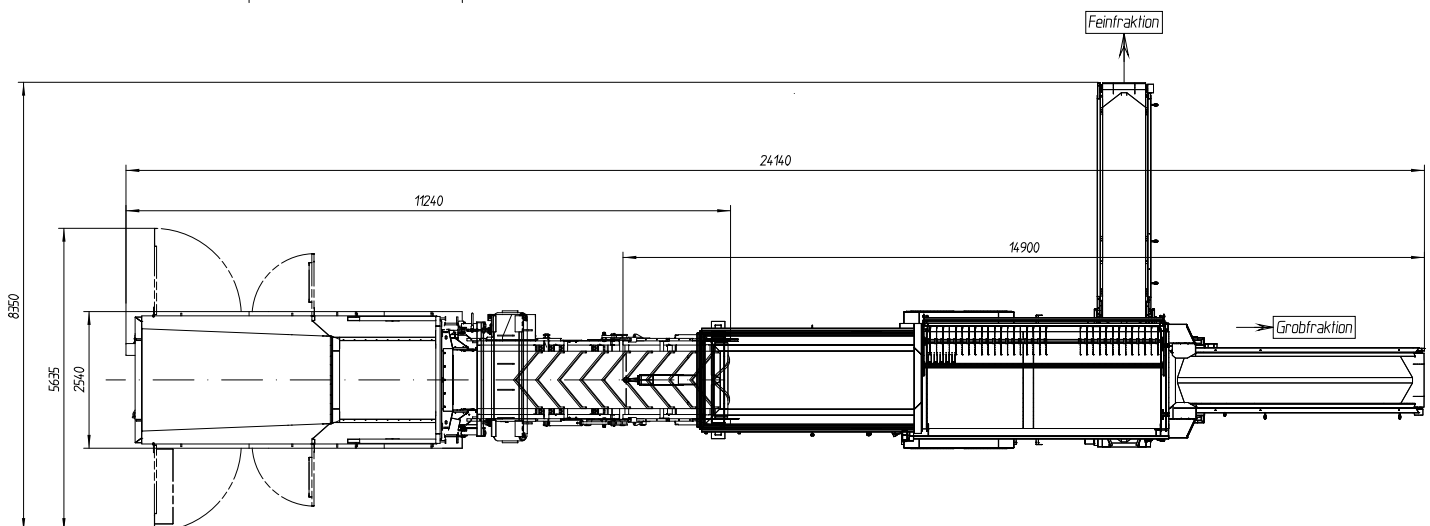
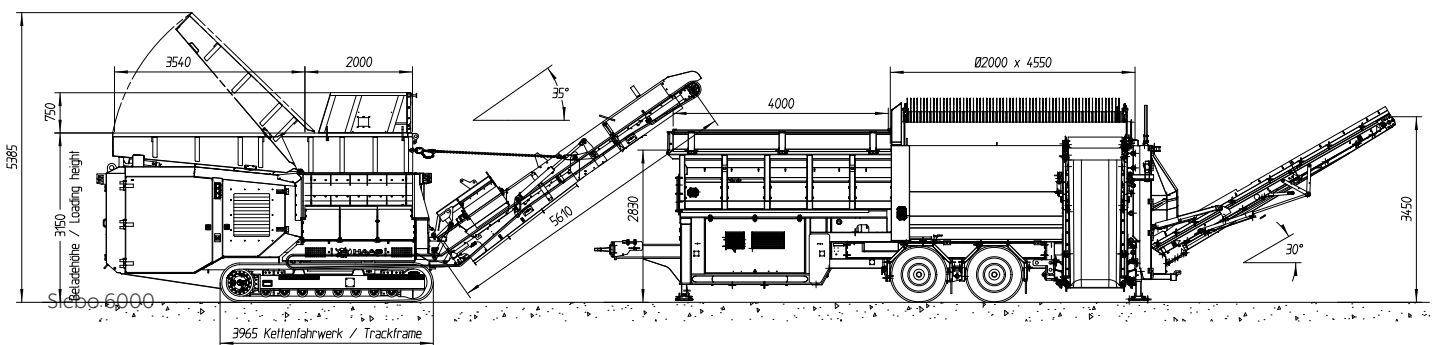
Dimensions	Siebo 5000	Siebo 6000	Siebo 8000
Machine length	14.900 mm	15.800 mm	18.300 mm
Machine width	6.800 mm		
Machine height	4.000 mm		
Transport length	11.000 mm	12.000 mm	13.700 mm
Transport width	2.550 mm		
Transport height	4.000 mm		

Hopper	Siebo 5000	Siebo 5000	Siebo 8000
Volume	ca. 6 m <sup>3</sup>	ca. 6,5 m <sup>3</sup>	ca. 7,5 m <sup>3</sup>
Feeding height	2.820 mm	2.830 mm	2.800 mm
Feeding width	4.000 mm		

Screening drum	Siebo 5000	Siebo 6000	Siebo 8000
Drum length	4.550 mm	5.550 mm	7.500 mm
Drum diameter	2.000 mm	2.200 mm	2.200 mm

Conveyor belts	Siebo 5000	Siebo 6000	Siebo 8000
Fines conveyor length (one-piece)	7.200 mm		
Fines conveyor width	1.000 mm	1.200 mm	
Discharge height (30°)	3.500 mm		
Overs conveyor length	5.500 mm	6.500 mm	
Overs conveyor width	1.000 mm	1.200 mm	
Discharge height (30°)	3.500 mm	4000 mm	

Drive	Siebo 5000	Siebo 6000	Siebo 8000
Power	55 kW / 75 PS		
Emission class	EU Stufe 5 EPA Tier 4 final		



**HAAS**<sup>®</sup>  
Recycling-Systems

HAAS Holzerkleinerungs-  
und Fördertechnik GmbH  
Unter den Weiden 6  
56472 Dreisbach / Germany

Tel.: +49 2661 9865-0  
sales@haas-recycling.de