

### TYRON 2000 XL

Basic informations	
Status:	★★★★★
ID:	ID: T2015-7400
Construction year:	2015
Working hours:	approx. 7.400 h
Mobility:	on tracks
Warranty of machine:	
Warranty of engine:	

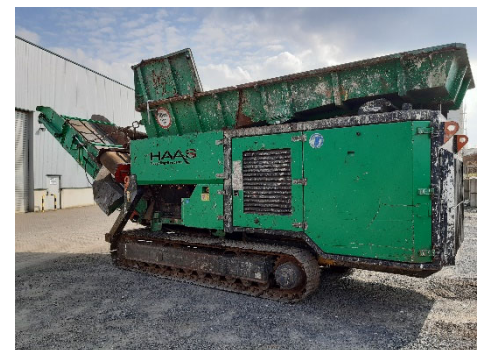


#### Grinding chamber configuration

- Incl. special hard reinforced tools, 7/7 tool carriers with 4 tools (tool consisting of main blade, primary shredding blade and secondary shredding blade)
- Shaft speed individually and infinitely variable from 0 to max 41 rpm
- Incl. breaker bar
- Incl. tipping trough

#### Drive unit

- Drive unit with 294 kW
- Incl. Scania Diesel, stage 4i/Euromot IIIB
- Incl. sound insulation set (standard)
- Incl. Power Ram pre filter before air filter unit
- Incl. central lubrication system for main bearings of shafts



#### Electrical-/ Control system

- Incl. IFM-Display
- Incl. remote control
- Incl. 4 shredding programs (wood, waste, green waste and special)

#### Outfeed belt

- Incl. outfeed belt conveyor

#### Individual Equipment

- Incl. Cleanfix
- Incl. belt with steel inlay
- Incl. overband magnet, hydr. height adjustable – Neodym –
- Incl. pivoting cooler
- Incl. hopper extension, 3 sides each ca. 800 mm
- Incl. electrical service pump for hydraulic oil

#### Reconditioning / Service

- Incl. complete hydraulic service
- Incl. complete engine service
- Incl. new hydraulic pumps + motors

**Price on request**