



## Second hand machines

Status 26.06.2020

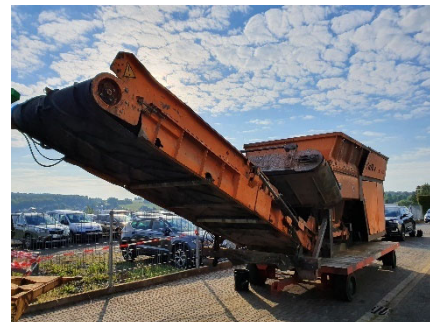
### Eurec S 20.00 D/015

ID: E2005-11200

**Construction year:** 2005  
**Operating Hours:** approx. 11.200 h

#### Machine configuration

Incl. 272 kW (360 HP) Scania Dieseleengine  
Incl. pre-welded tools; 4-elements with 7/7 discs  
Incl. breaker bar  
Incl. tipping hopper  
Incl. outfeed belt  
Incl. overbandmagnet (permanent)  
Incl. remote control  
Incl. pivoting axle  
Incl. hook lift frame  
Incl. 2x spare shafts; pre-welded tools 4-elemnts with 7/7 discs  
Incl. 2x spare pre-welded side comb



Reconditioning / Service

/

**Price on request**

**Warranty of machine:** /

**Warranty of engine:** /