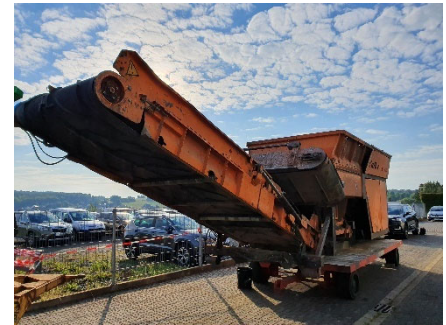


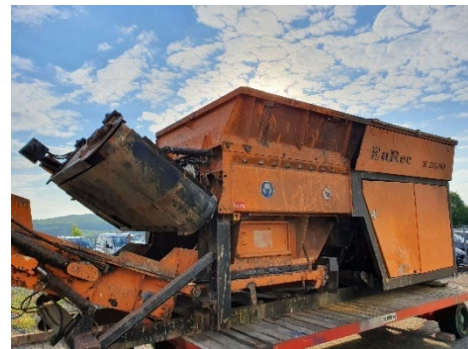
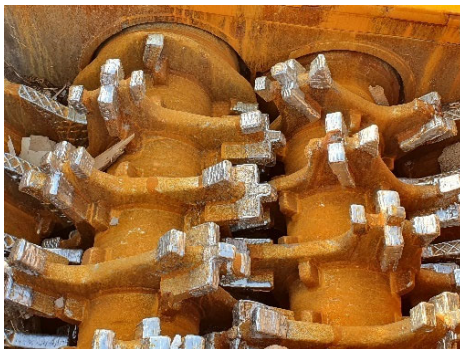
Eurec S 20.00 D/015

Basic informations	
Status:	★★★★
ID:	ID: E2005-11200
Construction year:	2005
Working hours:	approx. 11.200 Std
Mobility:	
Warranty machine:	
Warranty engine:	



Machine configuration

- Incl. 272 kW (360 HP) Scania Dieselenigne
- Incl. special reinforced tools, 7/7 tool carriers with 4 tools (tool consisting of main blade, primary shredding blade and secondary shredding blade)
- Incl. breaker bar
- Incl. tipping hopper
- Incl. outfeed belt
- Incl. overbandmagnet (permanent)
- Incl. remote control
- Incl. pivoting axle
- Incl. hook lift frame
- Incl. 2x spare shafts; pre-welded tools
- Incl. 2x spare pre-welded side comb



Price on request