



# HAAS RECYCLING



QUALITÄT  
MADE IN  
GERMANY

## Second hand machines

Status 26.06.2020

### **TYRON 2000 XL 2.0**

ID: T2016-1588

**Construction year:** 2016  
**Operating Hours:** approx. 1.588 h

#### **Machine configuration**

Installed on tracks

#### **Grinding chamber configuration**

Incl. special hard reinforced tools, 4-elements with 7/7 discs

Shaft speed individually and infinitely variable from 0 to max 41 rpm

Incl. breaker bar

Incl. tipping trough

#### **Drive unit**

Drive unit with 294 kW

Inkl. Scania Diesel, stage 4 final

Incl. sound insulation set (standard)

Incl. Power Ram pre filter before air filter unit

Incl. central lubrication system for main bearings of shafts

#### **Electrical-/ Control system**

Incl. IFM-Display

Incl. Remote control

Incl. 4 shredding programs (wood, waste, green waste and special)

Incl. Cleanfix

Incl. pivoting cooler

#### **Outfeed belt**

Incl. outfeed belt conveyor

#### **Included Options**

Incl. pre – welded tools 4 elements with 7/7 discs

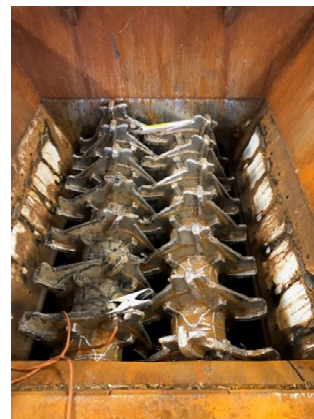
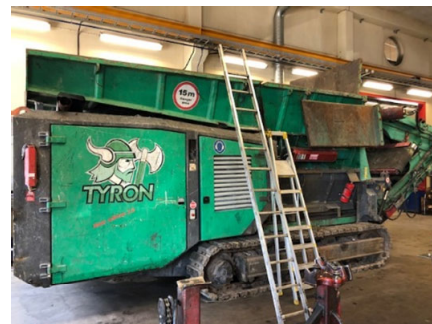
Incl. overband magnet, hydr. height adjustable (Neodym)

Incl. hopper extension, 3 sides each ca. 800 mm

Incl. additional hydraulic pump

Incl. all necessary piping

#### **Reconditioning / Service**



**Price on request**

**Warranty of machine: /**

+++++++ sales on behalf of a customer ++++++