



— QUALITY —  
**MADE IN  
GERMANY**

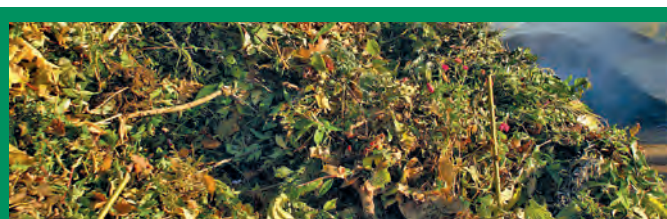


# HAAS Starscreen

## HSS 6000

Mobile 2-fraction-starscreen with integrated return of oversizes.  
For the screening of pre-shredded:

WASTE WOOD • ROOTS • GREEN WASTE • RESIDUAL WOOD  
RAILWAY SLEEPERS • PALLETS • PAPER ROLLS



**HAAS**<sup>®</sup>  
Recycling-Systems



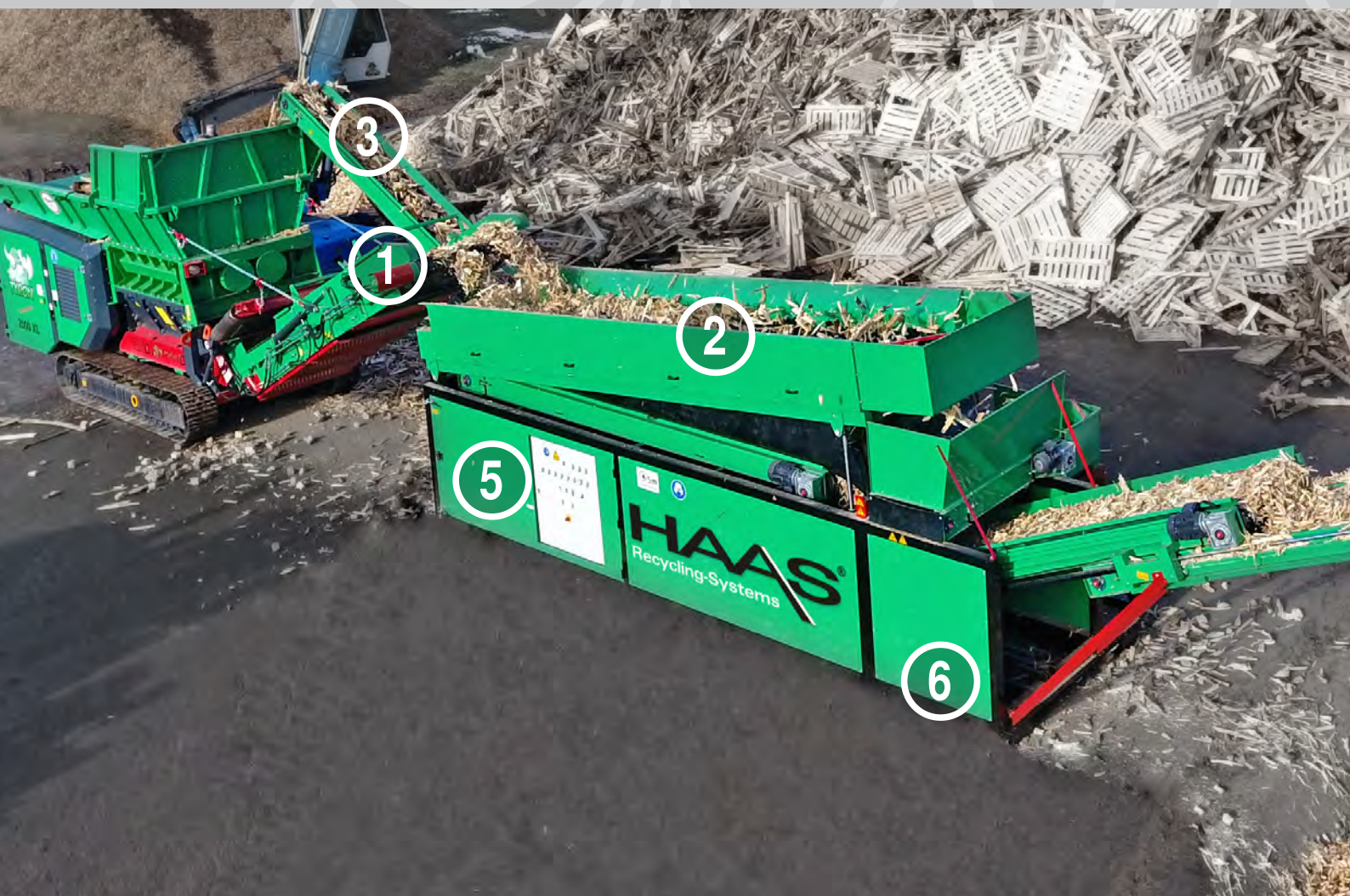
# HSS 6000

With the HAAS Starscreen you have the perfect screening system for the screening of pre-crushed biomass from green waste, roots or waste wood. The shredding work is done by a pre-crusher upstream of the screening machine.

The screening of a defined useful fraction with simultaneous return of the oversizes to the pre-crusher is the task of our HSS 6000 screening machine with a screening surface of 7,4 m<sup>2</sup>!

## Convincing!

- Wide range of applications, low operating cost
- Short setup times from transport to readiness for use
- Cleaning by means of built-in compressor incl. compressed air lance!
- Determination of useful fraction by imple adjustment of speed and / or inclination angle of the screen deck!
- Central lubrication optionally available!







## ① Material input

- The feed is carried out via the outfeed belt of the primary crusher



## ② Screen unit

- Size: 7,4 m<sup>2</sup> surface for a capacity up to 250 m<sup>3</sup>/h
- The HAAS-plug-in system makes a adaptation to other grain sizes easily and inexpensively possible



## ③ Oversizes

- The oversizes will be dropped on the swivelling return belt by the starscreen.
- The dropping height of approx. 4,6 m allows a material return for all TYRON-models and secures a efficient end product

## ④ Useful fraction

- The useful fraction is discharged by conveyor belt
- The dropping height is approx. 3,6 m



## ⑤ Driving Unit

- The individual screen shafts are driven by a special chain drive with two 7,5 kW motors!
- The power is supplied by an integrated unit.



## ⑥ Quality and Service

- Sturdy frame construction
- maintenance doors and easy to remove truck tarpaulins enable an optimal access



4

## Screen deck - version hooklift-mobile

### Screen unit

Screenstars	polyurethan with 9 fingers
Screen shafts	23 with plug-in system
Screen deck	1.200 x 6.000 mm (WxL) / 7,4 m <sup>2</sup>
Useful fraction	< 100 mm*
oversize	> 100 mm*

### Capacity

up to 250 m<sup>3</sup>

### Material discharge

Dropping height	useful fraction up to 3.600 mm
	rough fraction up to 4.600 mm
Oversize belt	as swivel belt 180° rotatable

### Measurements

Transport dimensions	2.500 x 7.800 x 2.700 mm (WxLxH)
Working dimensions	2.500 x 17.580 x 4.635 mm (WxLxH)

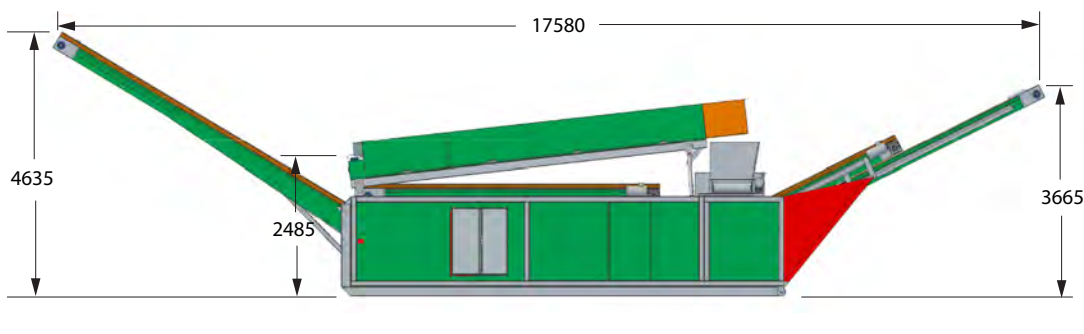
### Weight

13,5 bis 15 t (depending on screen insert)

### Driving unit

2x 7,5 kW / 2x 5,5 kW

\*Remark: The grain size can be determined by the arrangement of the sieve stars, the angle of the sieve deck and the speed of the sieve shafts.

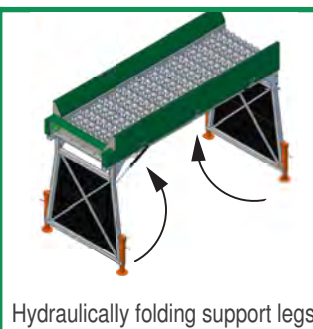


### HAAS Starscreen HSS 4000

The HSS 4000 is the little semi-mobile brother of the HSS 6000

**Screen area 1.200 x 4.200 mm / 5 m<sup>2</sup>**

**Request info now!**



Hydraulically folding support legs

